

Maintenance Manual

ATLAS FORCES

UNIQUE IN EVERY RESPECT



REWOLD



UNIQUE IN EVERY RESPECT



www.atlasforces.com

UNIQUE IN EVERY RESPECT



GÜLER WORLD
INDUSTRY & TECHNOLOGIES INC.

www.gulerworld.com



UNIQUE IN EVERY RESPECT ABOUT US

Since the day we were established, we, as ATLAS FORCES, have always aimed to keep customer satisfaction at the highest level by establishing a sales network in the defense sector, hunting rifles and military equipment.

We continue to serve with many products that the industry needs, from REWOLD, which is considered to be the best tactical rifle in the world, to shotguns with magazines, bullpups, pumps, semi-automatic shotguns, superpose and single shotguns.

We know how long a skill a defensive weapon requires. We at ATLAS FORCES have a solid industrial heritage that is strengthened by the expertise of our employees and the constant pursuit of innovation in our core technologies. With a sustainable business model, we continue to follow a long-term growth path that will create value for all our stakeholders. Our firearms, each of which is a work of art of a different delicacy, and which takes a long time to manufacture according to its model, passes only through the hands of experienced and expert masters during the time it spends in our factory.

ATLAS weapons are designed for superior performance. The production process relies on the precision of both modern technology and professional craftsmanship to meet the quality our customers expect. Our products have managed to become one of the most recognized brands in the world of firearms for civilians, suppliers and military customers.

Since our inception, we strive to ensure that every product we offer is unmatched in terms of quality, precision and world-class customer service. By making use of our design and production efficiency, we were able to offer our consumers valuable, special and quality products.

We love to produce high quality products and we always care about our suppliers more than any of our competitors. Our belief in the high value placed on reliable self-defense tools has led us to success over the years. As our company continues to grow, our commitment to continuing to deliver quality products, affordability and a level of service unprecedented in the firearms industry remains.

Not only do our firearms work well mechanically, we even test the mechanism parts inside. We believe that the subtleties in the details are important.

Our R&D department always attaches importance to testing in order to design creative, talent-enhancing and logical solutions to the ongoing dynamic challenges encountered in the field. State-of-the-art engineering, manufacturing and quality assurance methods are integrated into leading technologies that ensure the

products we manufacture exceed even the best industry standards. All of our products are rigorously tested in the toughest environments and under extreme conditions. Our unmatched manufacturing standards precede operational field experience leading to the use of tactical accessories.

As important as it is for hunting rifles to work with zero error mechanically, it is extremely important that the stock is accompanied by its perfect unity. A shotgun stock isn't made just to look good. It increases the ability of the forend shooters to observe the target much faster with their rifles, and also affects the success rate of their shots.

Our primary goal is to provide our customers, law enforcement and military personnel with the tools they need to defend their home, family or themselves and fulfill their duties, giving them the advantage they need, and providing optimum security and operational readiness. Everyone wants safety and security for their loved ones. We adopt a management system that provides leadership at all levels, using our workforce, processes and technology effectively to achieve sustainable success.

Producing robust and reliable products with strong target detection is among the priorities that make Atlas Atlas. We are committed to helping the world build self-confidence in defense and security. If the firearm in your hand is 100% suitable for you, you will definitely hit at least 7 out of 10 shots.

A firearm has a highly complex mechanism made up of countless sensitive parts. For example, in order for the trigger mechanism of a shotgun to be durable, the metal parts must fit together perfectly, so each piece is cut with a precision of 1/200 of 1 mm. This is a margin of error less than a hair's thickness. The most important part is where the chamber of the rifle is attached to the mechanism.

For this, the spark etching method is mostly used, which can cut extremely accurately. This reveals the fine workmanship in the production of firearms. Whether the last chamber closes perfectly or not is tested by our expert teams. An important step to prevent accidents from happening when you pull the trigger. We are aware of how and how much skill any firearm requires. Innovative mechanical design, meticulous manufacturing processes and innovative materials used in weapons stand out as the defining features of ATLAS and distinguish the company from other companies in this sector.





MANUAL

PAGE

6

LEGAL WARNING

6



DISMANTLING INSTRUCTION

13



OPERATION LOADING/UNLOADING THE MAGAZINE

13

INSTALLATION OF ROTARY TUBE MAGAZINE

16

DIAGRAM OF REWOLD

19

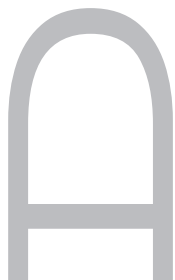


DIAGRAM OF REWOLD BARREL GROUP & BOLT GROUP

20

TRIGGER GROUP ASSEMBLY

22



MANUAL

Thank you for choosing our Semi-Automatic Rotary Magazine Shotgun. Our shotgun has an innovative design and is made of premium materials. It will serve you for many years with regular maintenance and proper use of ammunition.

To achieve the highest level of performance and reliability, read and understand all of the instructions and warnings in this manual.

Before using or firing real cartridges, you should fully know and understand the parts, functions and working mechanisms of your shotgun. Accordingly, carefully read and understand the methods for using your shotgun safely and effectively and information about the parts of your shotgun.

LEGAL WARNING

The firearm, which corresponds to the safety rules in this manual, has been sold provided that it complies with the instructions for use and safety, and the manufacturer declares that it does not accept legal responsibility for technical damage and other consequences, such as death, injury, which may arise from the product due to misuse.

The manufacturer does not accept legal responsibility in the following cases: Inadequate or careless use of the shotgun, improperly inadequate maintenance, use of hand refills or refilled cartridges in the shotgun to cause wear or damage, inadequate maintenance of existing guns and legal regulations, the sale of the original aesthetics, working mechanisms, accessories or modification or conversion of the mechanical structure of the shotgun for criminal or improper use of the shotgun is not understood, or not complied with, when using or operating the gun. Other situations, other than the direct control of the manufacturer.

State Warning

www.atlasforces.com

Warning: You are responsible For Firearms Safety



WARNING

Firearms must be handled responsibly and securely stored to prevent access by children and other unauthorized users.

California has strict laws pertaining to firearms, and you may be fined or imprisoned if you fail to comply with them. Visit the Web site of the California Attorney General at www.atlasforces.com / firearms for information on firearm laws applicable to you and how you can comply.

Prevent child access by always keeping guns locked away and unloaded when not in use. If you keep a loaded firearm where a child obtains and improperly uses it, you may be fined or sent to prison.

**WARNING**

Las armas de fuego deben de ser manipuladas responsablemente y almacenadas en sitios seguros para prevenir el acceso a ella por parte de niños y personas sin autorización.

California cuenta con leyes estrictas sobre las armas de fuego, y puede ser multado y encarcelado si no las obedece. Visite la página web de California Attorney General, [www.atlasforces.com / firearms](http://www.atlasforces.com/firearms) para más información sobre cómo cumplir con las leyes de armas de fuego.

Prevenga el acceso de los niños a las armas de fuego manteniéndolas siempre en un lugar seguro, bajo llave y descargadas cuando no estén en uso. Si usted deja un arma cargada al alcance de un niño, y éste la utiliza indebidamente, usted podría ser multado e incluso enviado a la cárcel.

**WARNING**

FAILURE TO FOLLOW ANY OF THE FOLLOWING WARNINGS COULD RESULT IN SERIOUS INJURY OR DEATH.

As a firearm owner, you accept a set of demanding responsibilities. How seriously you take these responsibilities can be the difference between life and death.

There is no excuse for careless or abusive handling of any firearm.

At all times handle this firearm and all other firearms with intense respect for their power and potential danger.

Please read and understand all of the cautions, warnings, notices, proper handling procedures and instructions outlined in this owner's manual before using your new firearm.

1 ALWAYS KEEP THE MUZZLE OF YOUR FIREARM POINTED IN A SAFE DIRECTION EVEN THOUGH YOU ARE CERTAIN IT IS UNLOADED.

Never point any firearm at anything you do not intend to shoot. Be extremely alert and aware of all persons and property within the range of your ammunition.

2 NEVER RELY TOTALLY ON YOUR FIREARM'S MECHANICAL "SAFETY" DEVICE. LIKE ANY MECHANICAL DEVICE, A "SAFETY" CAN SOMETIMES FAIL; IT CAN BE JARRED OR INADVERTENTLY MANIPULATED INTO AN UNSAFE CONDITION.

The word "safety" describes a firearm's trigger block mechanism, sear block mechanism, hammer block mechanism or firing pin block mechanism. Mechanical "safeties" are designed to place your firearm in a safer status, and no guarantee can be made that the firearm will not fire even if the "safety" is in the on safe position. Mechanical "safeties" merely aid safe gun handling and are no excuse for pointing your firearm's muzzle in an unsafe direction. See "Operation of the "Safety" on pages 12 and 15 for instructions on the operation of this firearm's "safety."

Remember, safe gun handling does not stop with your firearm's mechanical "safety" devices, it starts there. Always treat firearm with the respect due a loaded, ready-to-fire firearm.

Some firearms do not have a mechanical "safety". Many target firearms, lever-action firearms and pistols do not have manual "safety" mechanisms. Therefore, it is critical to read and understand the owner's manual for every firearm which explains the safe operation of the firearm. While it is a good idea to test your firearm's mechanical "safety" periodically for proper function, never test the "safety" while your firearm is loaded or pointed in an unsafe direction.

3 WHENEVER YOU HANDLE ANY FIREARM, OR HAND IT TO SOMEONE, ALWAYS OPEN THE ACTION IMMEDIATELY AND VISUALLY CHECK THE FIREARM'S CHAMBER TO MAKE CERTAIN THAT THE FIREARM IS COMPLETELY.

UNLOADED

Make certain the firearm does not inadvertently contain any ammunition. Remember, merely removing the magazine does not mean the chamber is unloaded. Always keep the chamber empty and the "safety" in the on safe position unless shooting is imminent.

4 ALWAYS WEAR EAR AND EYE PROTECTION WHEN SHOOTING.

Unprotected, repeated exposure to gunfire can cause hearing damage. Wear hearing protection (shooting earplugs or muffs) to guard against such damage.

Wear shooting glasses to protect your eyes from flying particles. Allow proper distance (eye relief) between a scope and your eye when firing a scoped pistol, rifle or shotgun. Do not use unorthodox shooting methods that could cause the rearward travel of the slide or bolt of a firearm to contact your eyes, face or hands.

Always keep a safe distance between the muzzle of your firearm and any persons nearby, as muzzle blast, debris and ejecting shells could inflict serious injury.

Always wear eye protection when disassembling and cleaning any firearm to prevent the possibility of springs, spring-tensioned parts, solvent or other agents from contacting your eyes.

5 KEEP ALL FIREARMS UNLOADED DURING TRANSPORT, EVEN WHEN STORED IN A HOLSTER, GUN CASE, SCABBARD OR OTHER CONTAINER.

6 DROPPING OR JARRING A LOADED FIREARM CAN CAUSE ACCIDENTAL DISCHARGE.

This can occur even with the "safety" in the on safe position. Be extremely careful while hunting or during any shooting activity to avoid dropping any firearm.

7 HUNTING FROM ELEVATED SURFACES SUCH AS TREESTANDS IS DANGEROUS.

Doing so may increase the risk of mishandling a firearm. The following rules should always be observed by you and those you hunt with. Always make certain that the stand being used is safe and stable. Always make certain that your firearm is unloaded when it is being taken up or down from the stand. Remember, a loaded firearm may discharge when dropped, even with "safety" in the on safe position.

8 STORE YOUR FIREARM AND AMMUNITION SEPARATELY, WELL BEYOND THE REACH OF CHILDREN.

Take prudent safeguards to ensure your firearm does not become available to untrained, inexperienced or unwelcome hands. Store all firearms in secure, locked cases or a gun safe. Keep your firearm unloaded when not in use.

9 BEWARE OF BARREL OBSTRUCTIONS.

Mud, snow and an infinite variety of other objects may inadvertently lodge in a barrel bore. It only takes a small obstruction to cause dangerously increased pressures that can damage your firearm and cause serious injury to yourself and others.

BEFORE CHECKING FOR A BARREL OBSTRUCTION, BE CERTAIN YOUR FIREARM IS COMPLETELY UNLOADED, THERE IS NOT A LIVE SHELL IN THE CHAMBER AND THE "SAFETY" IS IN THE ON SAFE POSITION.

After assuring yourself that the firearm is completely unloaded, open the breech or action and look through the barrel to be sure it is clear of obstructions. If an obstruction is seen, no matter how small it may be, clean the bore with a cleaning rod and patch as described on pages 16-18 of this owner's manual.

10 BE ALERT TO THE SIGNS OF AMMUNITION MALFUNCTION. IF YOU DETECT AN OFF SOUND OR LIGHT RECOIL WHEN A SHELL IS FIRED, DO NOT LOAD ANOTHER SHELL INTO THE CHAMBER.

If your firearm fails to fire, keep the muzzle pointed in a safe direction for a minimum of 30 seconds. Rotate the ejection area of the firearm away from you, carefully open the action and remove the shell from the chamber. If the primer is indented, the defective shell should be disposed of in a way that cannot cause harm. If the primer is not indented, your firearm should be examined by a qualified gunsmith and the cause of the malfunction corrected before further use. Glance down the barrel to make sure that no obstructions remain in the barrel. Completely clear the barrel before loading and firing again. Failure to follow these instructions can cause extensive damage to your firearm and possible serious injury to yourself and others.

11 NEVER INSERT A SHELL OF THE INCORRECT GAUGE INTO ANY FIREARM.

The gauge of your firearm is marked on the barrel. Store all shells of different gauges in separate and well-marked containers. Never store shells of mixed gauges in a common container or in your pockets. See pages 18-19 for more information on the correct ammunition for your firearm.

12 EXAMINE EVERY SHELL YOU PUT IN YOUR FIREARM.

We assume no responsibility for the use of unsafe or improper firearm and ammunition combinations, or damage or injury caused by damaged ammunition boxes. See pages 18-19 for more information on the correct ammunition for your firearm.

13 USE ONLY SAAMI APPROVED AMMUNITION.

The barrel and action of this firearm have been made with substantial safety margins beyond the pressures developed by established American commercial loads. Nevertheless, we can assume no liability for incidents which occur through the use of shells of nonstandard dimensions or which develop pressures in excess of commercially available ammunition which has been loaded in accordance with standards established by the Sporting Arms and Ammunition Manufacturers' Institute (SAAMI).

14 DISCHARGING FIREARMS IN POORLY VENTILATED AREAS, CLEANING FIREARMS OR HANDLING AMMUNITION MAY RESULT IN. EXPOSURE TO LEAD AND OTHER SUBSTANCES KNOWN TO CAUSE BIRTH DEFECTS, REPRODUCTIVE HARM AND OTHER SERIOUS PHYSICAL INJURY. HAVE ADEQUATE VENTILATION AT ALL TIMES. WASH HANDS THOROUGHLY AFTER EXPOSURE.

15 DO NOT SNAP THE FIRING PIN ON AN EMPTY CHAMBER; THE CHAMBER MAY NOT BE EMPTY!

Treat every firearm with the respect due a loaded firearm, even though you are certain the firearm is unloaded.

16 KEEP YOUR FINGERS AWAY FROM THE TRIGGER WHILE LOADING AND UNLOADING UNTIL SHOOTING IS IMMINENT.

17 BE SURE OF YOUR TARGET AND BACKSTOP, PARTICULARLY DURING LOW LIGHT PERIODS.

Know the range of your ammunition. Never shoot at water or hard objects.

18 ALWAYS UNLOAD YOUR FIREARM'S CHAMBER BEFORE CROSSING A FENCE, CLIMBING A TREE, JUMPING A DITCH OR NEGOTIATING OTHER OBSTACLES.
Never place your firearm on or against a fence, tree, car or other similar object.

19 BE DEFENSIVE AND ON GUARD AGAINST UNSAFE GUN HANDLING AROUND YOU AND OTHERS.

Don't be timid when it comes to firearm safety. If you observe other shooters violating any of these safety precautions, politely suggest safer handling practices.

20 BE CERTAIN YOUR FIREARM IS UNLOADED BEFORE CLEANING.

Because so many firearm accidents occur when a firearm is being cleaned, special and extreme care should be taken to be sure your firearm is unloaded before disassembly, cleaning location. Never test the mechanical function of any firearm with live ammunition.

21 TEACH AND SUPERVISE FIREARMS SAFETY TO ALL MEMBERS OF YOUR FAMILY, ESPECIALLY TO CHILDREN AND NON-SHOOTERS.

Closely supervise newcomers to the shooting sports.

22 NEVER DRINK ALCOHOLIC BEVERAGES OR TAKE ANY TYPE OF DRUGS BEFORE OR DURING SHOOTING.

Your vision, motor skills and judgment could be dangerously impaired, making your gun handling unsafe to you and to others.

23 READ AND HEED ALL WARNINGS IN THIS OWNER'S MANUAL, ON AMMUNITION BOXES AND WITH ALL ACCESSORIES THAT YOU INSTALL ON YOUR FIREARM.

It is your responsibility to secure the most up-to-date information on the safe handling procedures of your Winchester firearm. We assume no liability for incidents which occur when unsafe or improper firearm accessories or ammunition combinations are used.

24 PRACTICE PERIODIC MAINTENANCE, AVOID UNAUTHORIZED SERVICING.

Your firearm is a mechanical device which will not last forever, and as such, is subject to wear and requires periodic inspection, adjustment and service. Winchester firearms should be serviced by a Winchester Repeating Arms Authorized Repair Center or by our Service Facility in Arnold, Missouri. We assume no responsibility for injuries suffered or caused by unauthorized servicing, alterations or modifications of Winchester firearms.

25 DO NOT, UNDER ANY CIRCUMSTANCES, ALTER THE TRIGGER "SAFETY" OR OTHER PARTS OF THE FIRING MECHANISM OF THIS OR ANY OTHER FIREARM EXCEPT AS OTHERWISE DESCRIBED IN THIS MANUAL.

We reserve the right to refuse service on firearms that have been altered, added to or substantially changed. Removal of metal from the barrel, or modifications of the firing mechanism and/or operating parts may lead to a refusal of service on such firearms. You will be charged for parts and labor to return the firearm to original specifications prior to servicing your firearm.

With respect to **AFTERMARKET PARTS OR COMPONENTS** (including, for example, aftermarket trigger systems, barrels, muzzle brakes, suppressors, magazines, etc.), **USE AT YOUR OWN RISK**. Winchester firearms are designed and engineered to meet stringent safety standards. Winchester Repeating Arms is not responsible for personal injuries or property damage caused by alterations to a firearm. This includes the incorporation of aftermarket parts or components that may or may not satisfy Sporting Arms and Ammunition Manufacturers' Institute (SAAMI) standards (for example, an aftermarket trigger system may not satisfy SAAMI minimum trigger pull standards, etc..) or may create other dangerous conditions.

These conditions may or may not be apparent to the user (for example, installing an aftermarket barrel may have the effect of altering critical firearm dimensions, including headspace, and may create an unsafe firing condition, etc..).

**FAILURE TO FOLLOW THIS WARNING COULD RESULT IN SERIOUS INJURY OR DEATH, AS WELL AS CAUSE DAMAGE TO YOUR FIREARM.
BE CAREFUL!**

MAGAZINE SHOTGUN

DISMANTLING INSTRUCTION

MANUFACTURER NOTICE: IT IS DESIGNED TO WORK WITH ORIGINAL PARTS OF THIS SHOTGUN YOU HAVE PURCHASED. YOUR RESPONSIBILITY FOR THE SUITABILITY OF THE PARTS YOU HAVE PURCHASED, THEY HAVE BEEN INSTALLED IN AN APPROPRIATE MANNER AND THE UNCHANGED OF THESE PARTS. GUARANTEED BY OUR SHOTGUN'S EFFICIENT AND EFFICIENT OPERATION, THE WARRANTY COMMITTED INCLUDES TO REPLACE THE PARTS MADE IN OUR FACTORY ONLY THE CHANGE ON THE SHOTGUN. THE USER IS RESPONSIBLE FOR THE REBUILDING AND RUNNING OF THE SHOTGUN AFTER THE SHOTGUN DISASSEMBLE OR AFTER THE AUTHORIZED PEOPLE AFTER PARTS REPLACEMENT.

CHOKES VALUES	CHOKES USAGE	SIGN
*	Long distance prey in water catches such as duck hunting. (SINGLE BULLET)	○
***	Woodcock, pheasant, quail and partridge hunting in this manner (SINGLE BULLET)	○
*****	For very short range hunting and shooting	○

OPERATION**LOADING/UNLOADING THE MAGAZINE**

The firearm use either 2-3/4- or 3-inch 12-gauge shells.
Use only shells of this size.



FIGURE 1

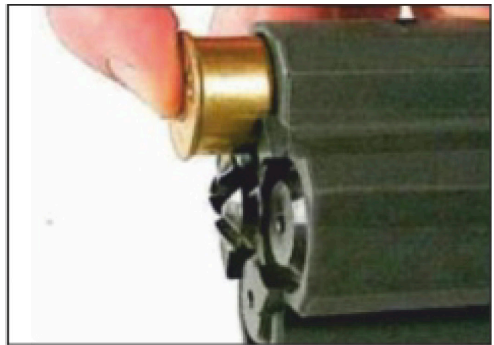
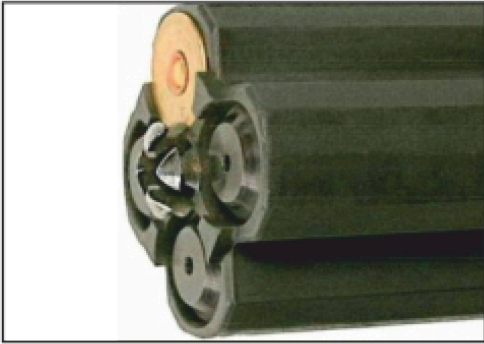


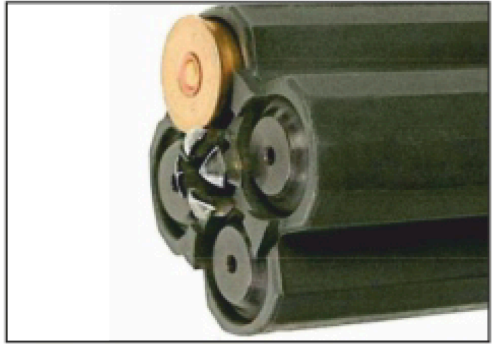
FIGURE 2

To load the magazine place the first shell on top of one of the four magazine followers. FIGURE 1

1. Make sure the shot or projectile end of the shell is pointing towards the front of the magazine. Push the shell against the follower and insert it into the magazine. FIGURE 2



CORRECT FIGURE 3



INCORRECT FIGURE 4

The shell retainer has two separate steps. The shell must be fully seated beneath both of these steps. FIGURE 3. Do not insert a loaded magazine in the firearm if a shell is not fully seated in the magazine. FIGURE 4. Place additional shells in the magazine tube up to four shells in each tube. Repeat this procedure for each tube of the magazine as desired.



FIGURE 5

To unload a magazine, pull inward on the upper edge of the shell retainer, located in the center of the magazine. FIGURE 5.

Use only original commercially manufactured ammunition in good condition which is appropriate to the firearm. Atlas Forces does not recommend the use of remanufactured or hand loaded ammunition. Do not use shells that are wet, corroded, damaged or dirty. Do not use lubricants where excess material may contact the shells. Foreign matter or lubricant on shells may cause a dangerous malfunction. The use of reloaded, remanufactured, hand loaded or other non-standard ammunition voids all warranties. Improperly loaded ammunition voids all warranties.



1) To eject the magazine:
Pulling the magazine lock knob up first and turn it clockwise to lock it up.



2) Turn the tube magazine half a turn clockwise and remove it.



3) Loosen the forend fastening nut and push the forend forward as shown.

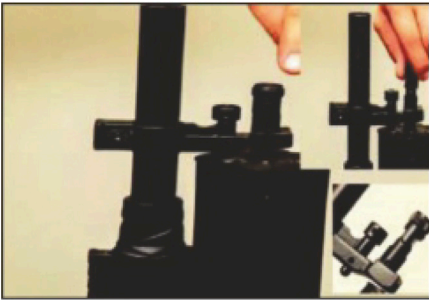


- 4) With the appropriate Allen key that comes in the box unscrew and loosen the gas chamber fixing nut.
- 5) Gas pull the gas chamber up and move the piston and clean the plunger with the help of a cloth.



- 6) Pull the gas chamber up clean the gas holes with barrel gas cleaning stick in the box.

INSTALLATION OF ROTARY TUBE MAGAZINE



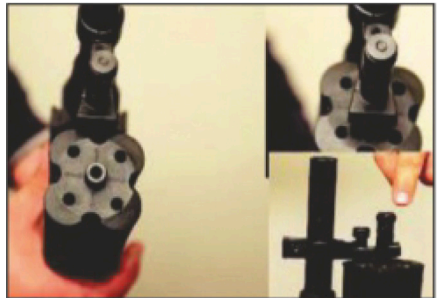
- 1) Pull the magazine lock knob upwards first turn right or left to lock.



- 2) Tube magazine after locking magazine dip button above 1-2cm turn left and right and pull down.



- 3) For use the 16's cartridges capacity magazine, first put it in tube magazine's slot in the holder casing.

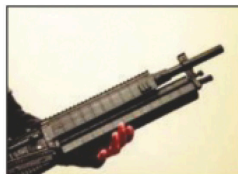


- 4) Match any of the arrow marks on the magazine locking mechanism and push the tube magazine downwards to push it forward and turn the magazine lock knob back to the closed position.



5) Installing and removing a single tube (2 or 4) tube always bring the single tube to the side position.

6) Pressing the one tube down to the side position push forward and turn the magazine lockout to the closed position again.



7) Turn the tube make the cartridge ready to fire, the mechanism will move the cartridge to the cartridge chamber.



8) To separate the lower body and the upper body, pull out the pins on the front and back and separate the lower body and the upper body.



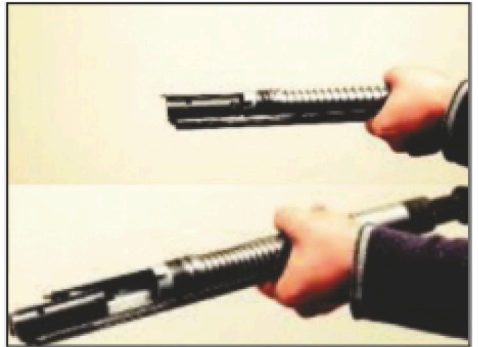
9) Pull out the bolt pin.



10) With the key in the box loosen the barrel fastening screw.

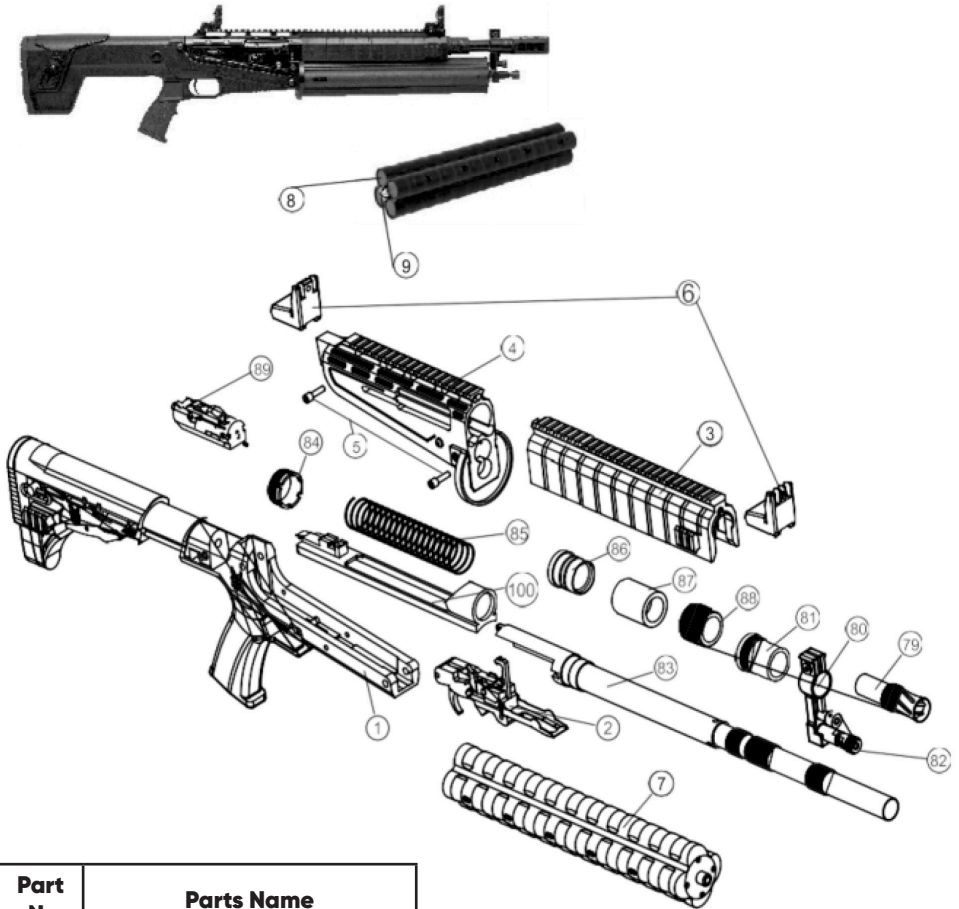


11) After loosening the attachment screw pull the barrel forward and unscrew.



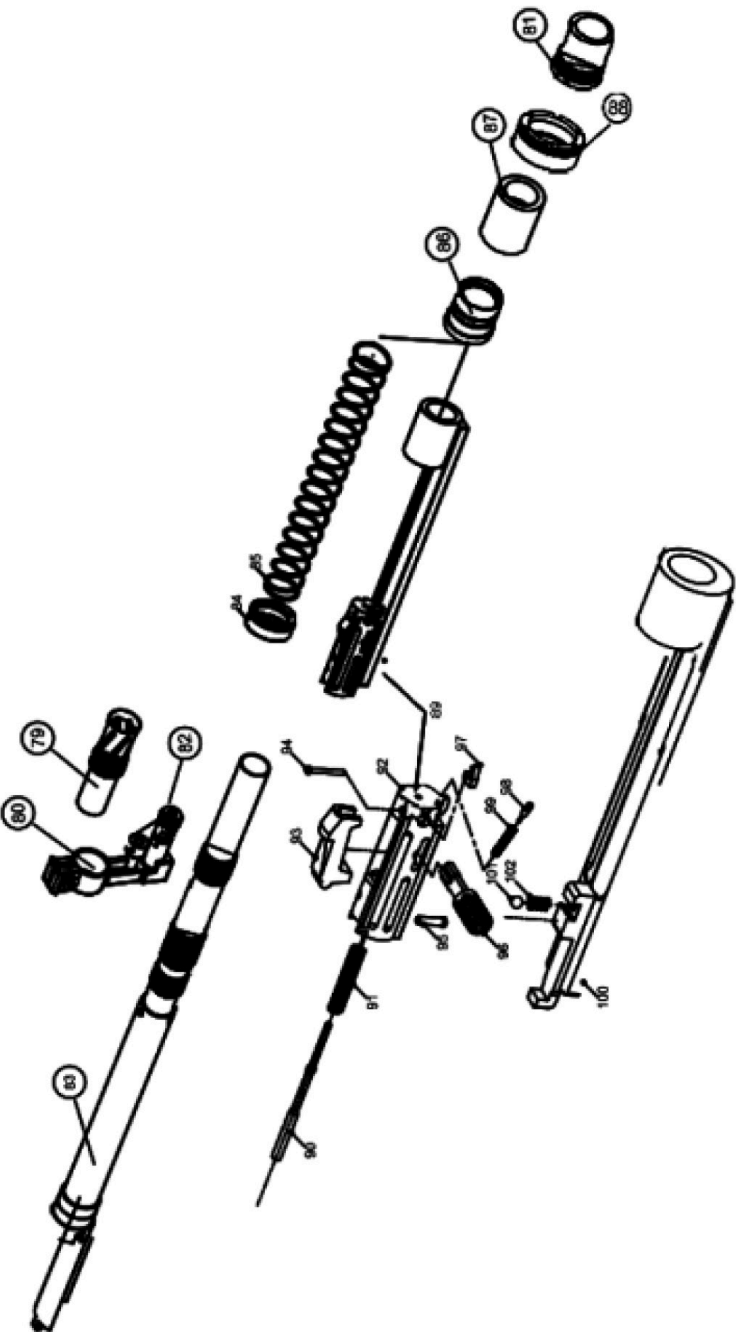
12) Hold the handle tube to tighten the spring and remove the mechanism from the cap of the barrel.

DIAGRAM OF REWOLD



Part Nr	Parts Name
1	REWOLD LOWER FRAME
2	TRIGGER GROUP
3	UPPER HANDGUARD
4	UPPER FRAME
5	TAKEDOWN PIN
6	SIGHT SET
7	TUBE MAGAZINE
8	FOLLOWER
9	SHELL RETAINER

DIAGRAM OF REWOLD BARREL GROUP & BOLT GROUP

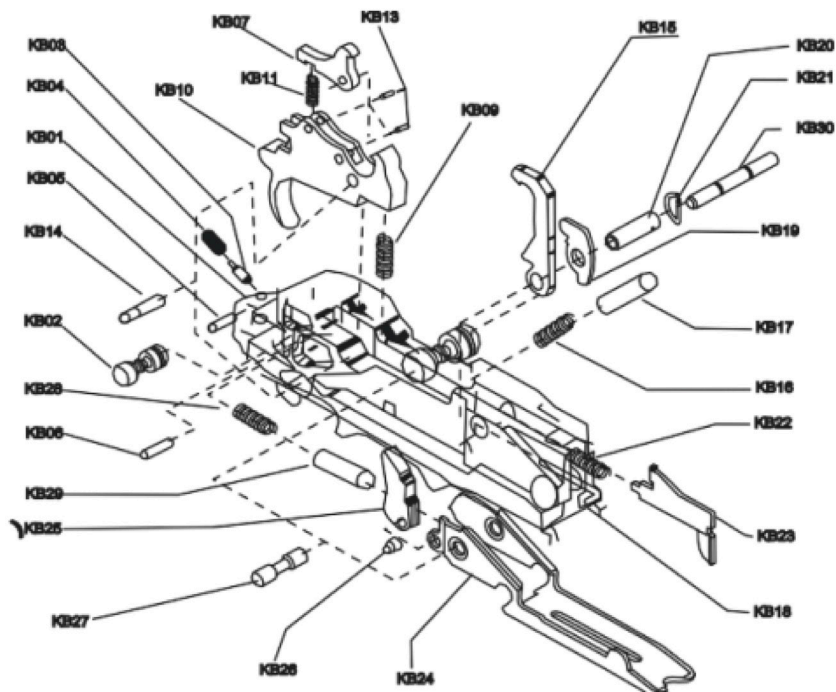


Part Nr	Parts Name
79	FLASHHIDDER(OPTIONAL)
80	MAGAZINE ROTATION MECHANISM
81	UPPER BARREL PROTECTION FORE END NUT
82	MAGAZINE LOCKING LATCH
83	BARREL
84	BARREL NUT
85	OPERATION SPRING
86	GAS PISTON
87	GAS SYSTEM
88	GAS ROOM NUT
89	BOLT GROUP ASSEMBLY

BOLT GROUP ASSEMBLY

Part Nr	Parts Name
90	FIRING PIN
91	FIRING PIN SPRING
92	BOLT
93	BOLT LOCK
94	EXTRACTOR PIN
95	FIRING PIN RETAINER
96	BOLT HANDLE
97	EXTRACTOR
98	EXTRACTOR SPRING PIN
99	EXTRACTOR SPRING
100	ACTION BAR (CARRIER)
101	CARRIER BALL
102	CARRIER BALL SPRING

TRIGGER GROUP ASSEMBLY



Stock No	Description	Stock No	Description
KB01	TRIGGER GUARD	KB17	HAMMER SPRING CAP
KB02	HAND SAFETY	KB18	HAMMER LATCH SPINDLE
KB03	SAFERY PLUNGER SPRING PIN	KB19	HAMMER LATCH
KB04	SAFERY PLUNGER SPRING	KB20	HAMMER TUBE PIN
KB05	SAFERY SPRING RETAINING PIN	KB21	HAMMER TUBE PISTON RING
KB06	TRIGGER FIXING PIN	KB22	TRIGGER GUARD LATCH SPRING
KB07	DISCONNECTOR	KB23	TRIGGER GUARD LATCH SPRING
KB09	TRIGGER SPRING	KB24	CARRIER
KB10	TRIGGER	KB25	BREECH BOLT LATCH
KB11	HAMMER DROP SPRING	KB26	BREECH BOLT LATCH PIN
KB12	HAMMER DROP PART	KB27	CARRIER PIN
KB13	HAMMER DROP PIN	KB28	CARRIER SPRING
KB14	TRIGGER PIN	KB29	CARRIER SPRING PIN
KB15	HAMMER	KB30	RECEIVER PIN
KB16	HAMMER SPRING		



IMPORTANT NOTICE: In case of malfunction in your shotgun, you can get detailed help regarding the malfunction by contacting our authorized after taking the security measures.



IMPORTANT NOTICE: If there is a malfunction that needs to come to service after contacting our factory technical service, in accordance with the instructions to be given by our technical service representative, by filling in the form below, adding a copy of the official warranty document, invoice and license by our authorized dealer to our specified address. Please send it using the agreement code. The shipping prices of the products sent to the factory technical service under the warranty will be covered by our company if they are sent with the contracted covered by our company if they are sent with the contracted cargo company. (Shipping costs of the products whose warranty is finished will be covered by the user. For the ongoing products, the shipping costs of the customer - related faults belong to the user.)

SERVICE AGREEMENT AND LIMITED WARRANTY

Atlas Forces Defence agrees to service its products free of charge for defects in materials and workmanship in accordance with the service agreement listed below. The obligation of Atlas Forces Defence Industries under this agreement is limited to the repair or replacement of unserviceable parts and does not cover any incidental or consequential damages. Other than the express warranty contained herein Atlas Forces Defence Industries makes no warranties, express or implied.

Atlas Forces Defence will repair or replace any unserviceable part(s) for two (2) year from date of purchase and further will supply free parts (Wood not included) for an additional two (2) years in accordance with the above warranty statement provided your firearm had not been altered, abused, willfully damaged, or damaged by overpressure ammunition. This agreement is not transferable; its benefits apply only to the original purchaser.

To obtain free service during the time this agreement is in effect, make sure your firearm is unloaded, and send it to Atlas Forces Defence Industries.

This agreement and the warranties contained herein are void if your registration card is not received with a copy of your sales slip within 30 days from date of purchase

WARANTY CARD

NAME OF PURCHASER: _____

ADRESS OF PRUCHASER: _____

CITY: _____ STATE: _____ ZIPCODE: _____

MOBILE PHONE: _____

PURCHASE DATE: _____

PRODUCTMODEL/NUMBER: _____

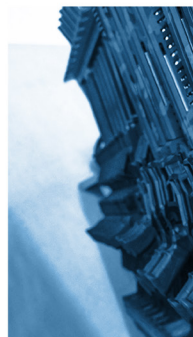
GAUGE: _____ SERIAL NUMBER: _____

PURCHASEPRICE: _____

STORE NAME: _____

SIGNATURE: _____





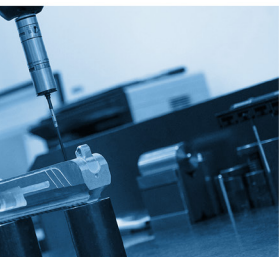


GÜLER WORLD
INDUSTRY & TECHNOLOGIES INC.

www.gulerworld.com



**UNIQUE
IN EVERY
RESPECT**



UNIQUE IN EVERY RESPECT.

////////////////////////////////////

ATLASFORCES

CONTACT INFORMATION

GULER ARMS SİLAH SANAYİ VE TİCARET LTD. ŞTİ.

ADDRESS - ADRES

Fevzi Çakmak Mah. Medcezir Cad.

A Blok 10/ 121 Karatay / KONYA - TURKEY

PHONE - TELEFON

+90 332 342 1 304

WEB - ONLINE

www.atlasforces.com

E-MAIL - E-POSTA

info@atlasforces.com



#atlasforces